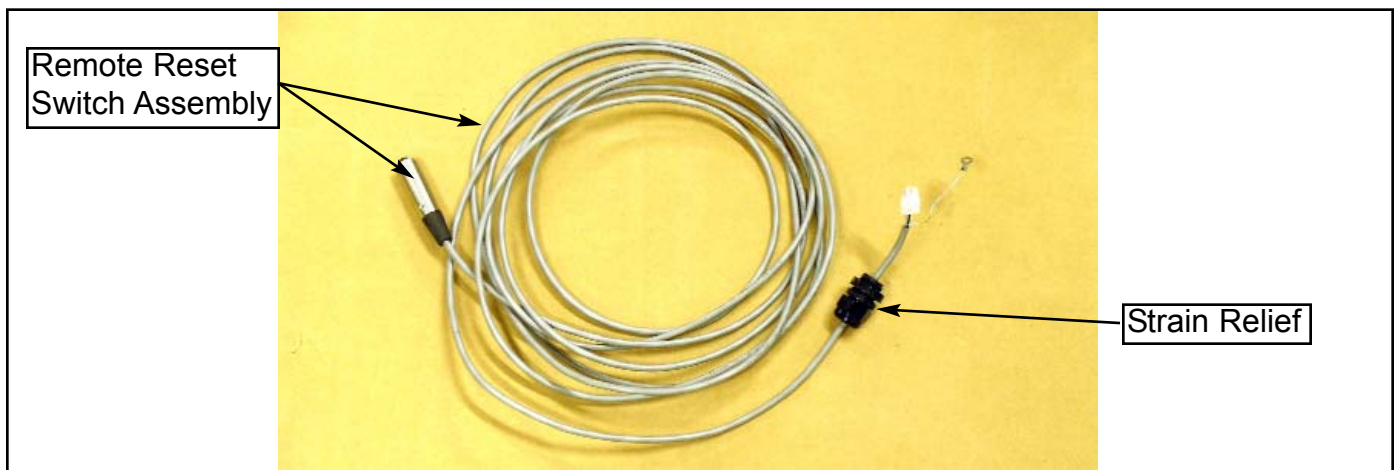




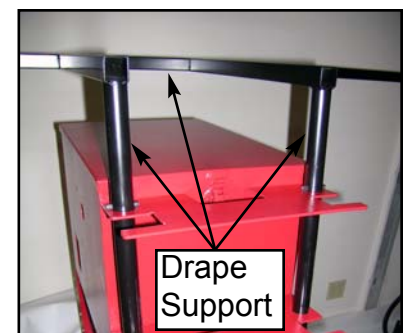
Replacing the Remote Reset Switch

In certain cases, such as using the Chuck A Luck on a carpet when humidity is low, a static discharge to the “Remote Reset Switch” may reset the score or lock up the machine. This change provides a safe path to the ground for the static to discharge.

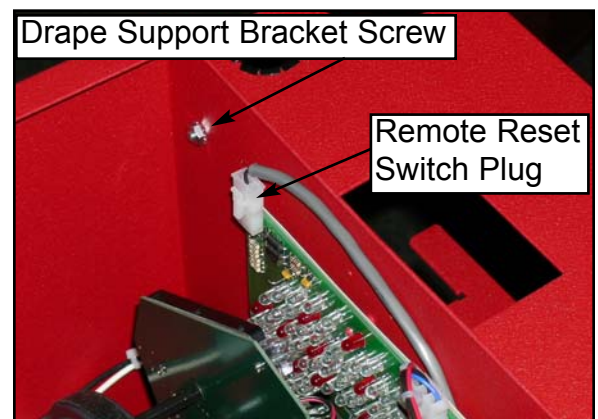
Qty.	Part Name	Part Number
1	Remote Reset Switch Assembly	42394
1	Strain Relief	42371



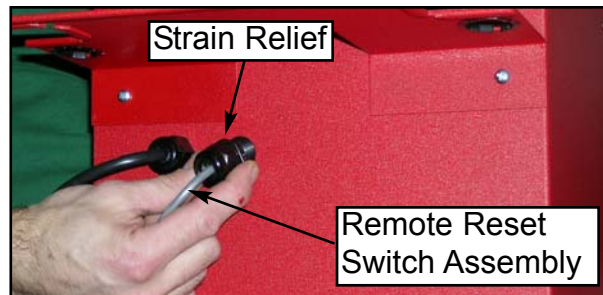
1. Unplug the Chuck A Luck.
2. Remove the drape and drape support.
 - a. Lower the drape support.
 - b. Remove the drape from the drape support.
 - c. Remove the drape support from the drape support brackets.



3. Remove the screw from the top right drape support bracket. This screw will attach the static drain wire to the motor enclosure assembly when reassembled.
4. Scrape off some of the paint around the hole. We need metal to metal contact for the static drain wire in the remote reset switch.
5. Remove the white plug from the LED PCB.



6. Using two pliers, remove the strain relief from the back of the motor enclosure assembly.
7. Remove the remote reset switch cable.



8. Insert the new remote reset switch cable into the motor enclosure assembly. One half of the strain relief is already attached to the cable.
9. Tighten the nut to the strain relief on the inside of the motor enclosure assembly.



10. Attach the white connector on the cable to the white connector on the LED PCB. These connectors are keyed so they can not be put in backwards.



11. Reattach the top right drape support bracket screw. The static drain wire gets attached to the Motor Enclosure Assembly using the Drape Support Bracket screw.



12. Reattach the drape support and the drape.